

# Wireless Setup for CSCC Secure Wireless Network for Windows 7

Article Number: 265 | Rating: 4/5 from 6 votes | Last Updated: Aug 28, 2017 at 9:31 AM

## ISSUE

Wireless Setup for CSCC Secure Wireless Network for Windows 7

## ENVIRONMENT

CSCC Wireless

Windows 7

## RESOLUTION

The following instructions apply to Windows 7. If you have ever attempted to connect this device to CSCC Wireless, follow these removal instructions first.

1. Go to **Start > Control Panel > Network and Internet > Network and Sharing Center >** and then select **Manage Wireless Networks** from the panel on the left.
2. Select any instances of **CSCC** from the list and then press the **Remove** button.

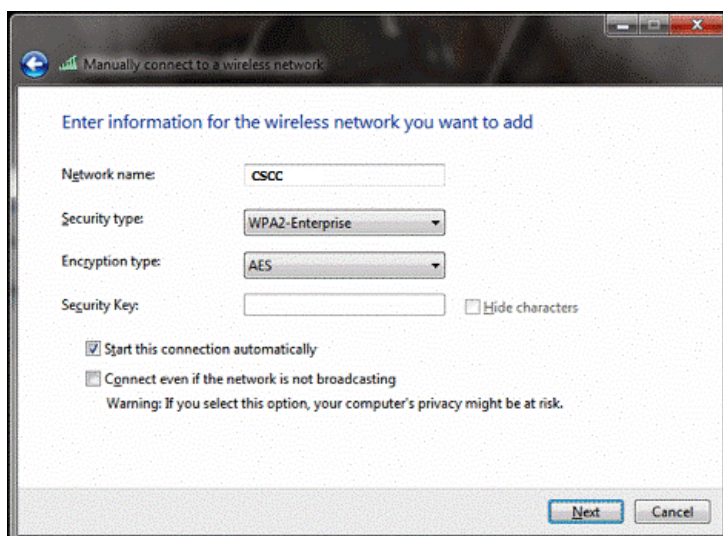
After previous connections to CSCC have been removed, follow the configuration steps below to connect to CSCC Secure Wireless successfully.

### Configuration

1. Click on the **Start Menu**, then **Control Panel**
2. Under the "Network and Internet" section, click **View network status and tasks**

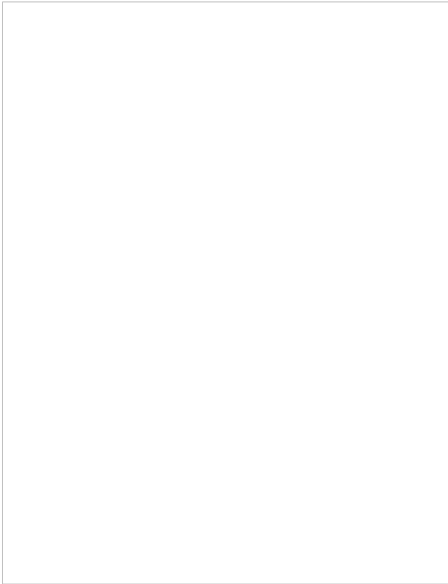
*If you are in the Classic control panel view, double-click **Network and Sharing Center***

3. Click **Manage Wireless Networks** at the left.
4. Click **Add**.
5. Click the **Manually create a network profile** button.
6. Enter the network connection information:
  1. Network name: **CSCC**.
  2. Security type: **WPA2-Enterprise**. *Do not to select WPA2-Personal.*
  3. Encryption type: **AES**.



7. Click **Next**.
8. Click **Change Connection Settings**.
9. Click on the **Security** tab.
  1. Choose **Microsoft: Protected EAP (PEAP)** from the "Choose a network authentication method" menu.
  2. Click **Advanced settings**.
    - Check the **Specify authentication mode** checkbox and choose **User or Computer authentication**.

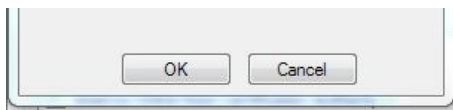
- Click **OK**.



3. Click **Settings...**
4. *Uncheck* the "**Validate server certificate**" checkbox.

▪

5. Under "Select Authentication Method", select **Secured password (EAP-MSCHAP v2)**.
6. *Uncheck* the **Enable Fast Reconnect** checkbox.
7. Press **Configure...**
8. *Uncheck* the **Automatically use my Windows logon name and password (and domain if any)** checkbox.



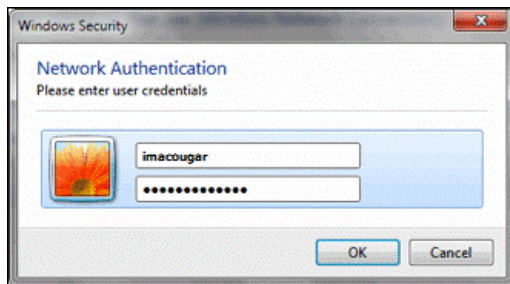
8. Click **Ok** two (2) times then click **Close**.

Your computer should now be configured to authenticate to the CSCC Secure Wireless network.

### What To Expect When You First Connect

When the computer is powered on and inside a CSCC Wireless coverage area, a balloon will pop up in the lower right corner of the screen that says "Additional information is required to connect to CSCC".

- Click on the balloon.
- A login screen will appear.
- Enter your **CSCC Username** and **password**. Leave the **Logon domain** blank and then click **OK**.



You may be asked to accept a certificate the first time you connect. If so, the certificate will be named **col-isepsn.csc.c.edu** or **del-isepsn.csc.c.edu**.

In the **Validate Server Certificate** window that appears, select **View Server Certificate** and verify the certificate name is **col-isepsn.csc.c.edu** or **del-isepsn.csc.c.edu**.

*If it is not, someone may be trying to steal your data!* Click **Cancel** and contact the IT Support Center at 614-287-5050 **immediately**.

If the certificate name is **col-isepsn.csc.c.edu** or **del-isepsn.csc.c.edu**, click **OK** to accept.

Your computer should connect and show a balloon with the status of the connection.

### CAUSE

N/A

### METADATA

Author: Christopher Bunner

Create Date: 0700 1/29/2015

Modified Date: 0600 2/2/2015

Posted by: [Christopher Bunner](#) - Jan 29, 2015 at 7:03 AM. This article has been viewed 9892 times.

Online URL: <https://kb.csc.c.edu/article/wireless-setup-for-csc.c-secure-wireless-network-for-windows-7-265.html>