

# Wireless Setup for CSCC Secure Wireless Network for Mac OSX

Article Number: 266 | Rating: 5/5 from 3 votes | Last Updated: Aug 28, 2017 at 9:31 AM

## ISSUE

Wireless Setup for CSCC Secure Wireless Network for Mac OSX

## ENVIRONMENT

CSCC Wireless

Mac OSX

## RESOLUTION

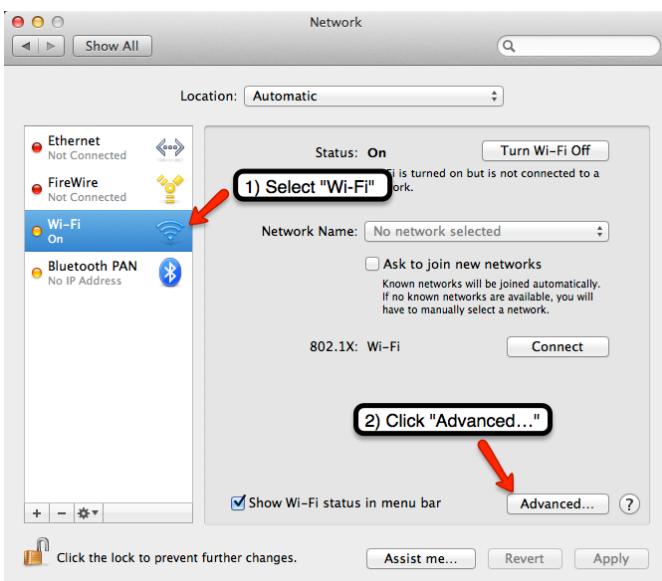
Note: **If you have previously been connected to CSCC Wireless, please follow these instructions to make sure that all previous connections have been removed. Failure to do so may interfere with future connections.**

To remove all traces of CSCC Wireless Network from your OSX 10.7 or 10.8 machine:

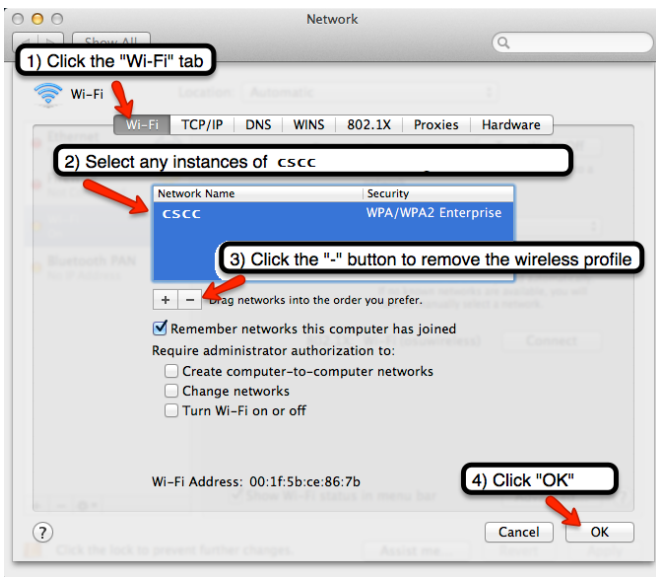
- Click on your **wireless networks icon**, and select **Open Network Preferences**.



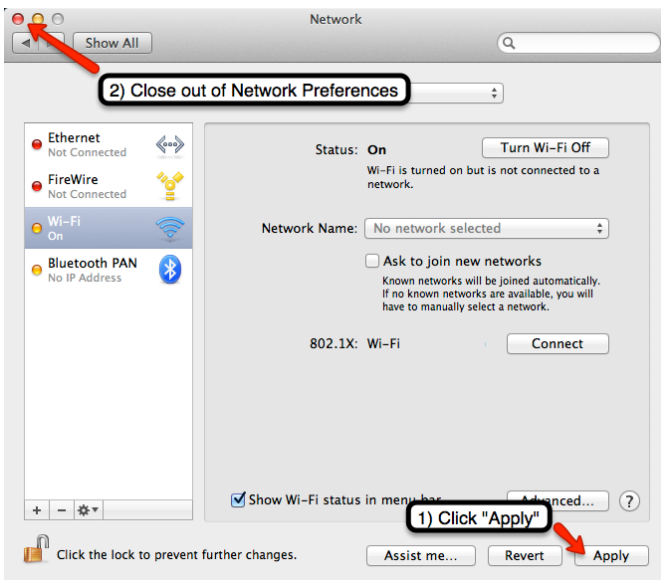
- Click **Wi-Fi** on the left, and click **Advanced...** at the bottom right



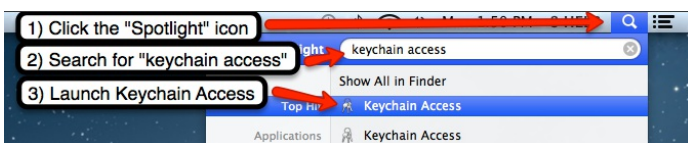
- Click the **Airport** tab.
- Under Preferred Networks, select each profile listed as **CSCC** and click the -(minus) sign.
- Click the "OK" button.



- Click **Apply** within the Network system preference window.
- Close out of the network preferences window



- Select the **Spotlight** feature (symbolized by a magnifying glass icon) in the top right corner of the menu bar
- Within the text box, type **keychain access**. Once you see the **keychain access** highlighted, press enter/return



- Select the **login** keychain from the list of keychains in the upper-left.

If you do not see a list of Keychains, go to the **View** menu and select **Show Keychains**.

- Under Category, select **Passwords**.
- From the list displayed, select and delete all "AirPort network password" and "802.1X Password" items associated with **"CSCC"**.
- Under Category, select **Certificates**.
- From the list displayed, select and delete all certificates labeled **CSCC** and those ending in **csc.edu**.

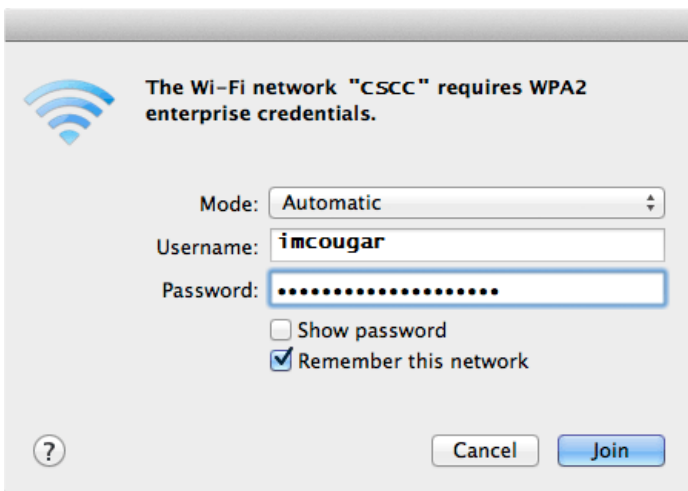
At this point, CSCC Wireless should be completely removed from your computer

#### To configure Mac OS X 10.7 or 10.8 for CSCC Wireless:

- Select **CSCC** from the WiFi menu in the upper right menu bar



- At the username and password prompt, type your CSCC Username and password



- You will be prompted with a "Verify Certificate" window. Within the window, select **Show Certificate** and verify that the server name is **col-isepsn.cscs.edu** or **del-isepsn.cscs.edu** AND is marked as Valid.
  - If it does, click **Continue**
  - *If it is not, someone may be trying to steal your data!* Click **Cancel** and contact the IT Support Center **immediately** at 287-5050.
- If you are prompted to "Make changes to the your Certificate Trust Settings," type your computer password.

You are now finished! When in an area with CSCC Wireless coverage, your machine should connect to the college wireless network.

If your device/OS has an option to "Remember my Credentials" or similar, check this option to reconnect to CSCC Secure Wireless when in range.

## CAUSE

N/A

## METADATA

Author: Christopher Bunner

Create Date: 0730 1/29/2015

Modified Date: 0710 2/2/2015

Posted by: [Christopher Bunner](#) - Jan 29, 2015 at 7:27 AM. This article has been viewed 6935 times.

Online URL: <https://kb.cscs.edu/article/wireless-setup-for-cscs-secure-wireless-network-for-mac-osx-266.html>