

Outlook 2013 -- Mail Restrictions

Article Number: 330 | Rating: Unrated | Last Updated: May 18, 2015 at 9:05 AM

ISSUE

Outlook 2013 -- Mail Restrictions

ENVIRONMENT

CSCC Network

Outlook

Email

RESOLUTION

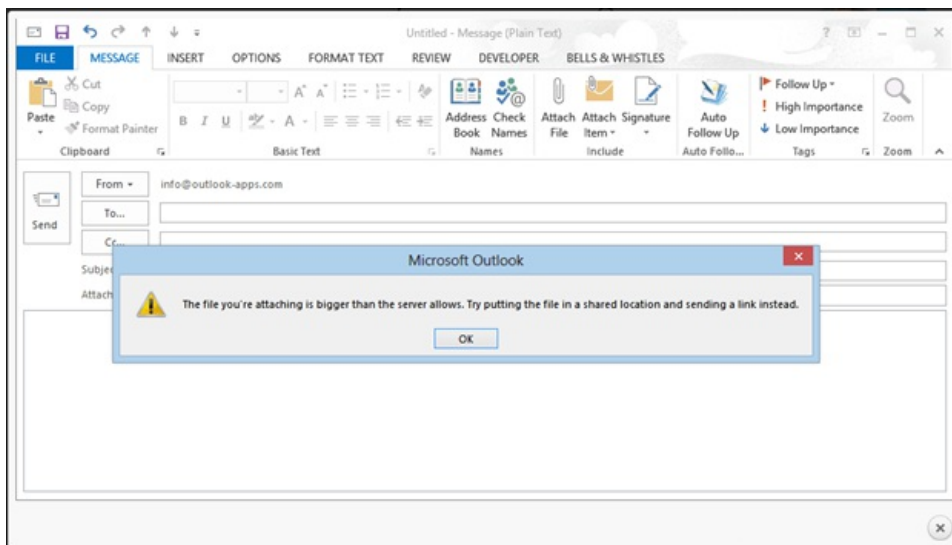
Outlook 2013 Mail Restrictions:

A user can send an email with upwards of 500 people on the same message.

A user can send up to 1500 messages per day.

Mail Size Restrictions:

Like its previous versions, Outlook 2013 limits you to maximum 20 Mb per email attachments (no matter if it is a single file or multiple files that count to 20 Mb). If you try to attach files greater than 20 MB, you will receive the following Outlook error message:



How to send files greater than 20 Mb with Outlook 2013:

If you need to send files greater than 20 MB, you have two solutions:

1. Upload the file(s) to a file sharing or cloud service (such as DropBox, iCloud or SkyDrive) and email the download link instead of the actual files.
2. Compress the file attachment using a compression utility like WinZip or WinRAR.

CAUSE

N/A

METADATA

Author: Christopher Bunner

Create Date: 05/18/2015 0900

Modified Date: 05/18/2015

Posted by: [Christopher Bunner](#) - May 18, 2015 at 9:05 AM. This article has been viewed 5818 times.

Online URL: <https://kb.csc.ccc.edu/article/outlook-2013-mail-restrictions-330.html>